

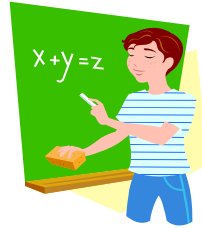
ADVISING FLOWCHART

Are You a High School Student?

TAKS EXEMPTION SCORES
MATH > 2200

READING/WRITING
ELA > 2200 WITH 3 OR HIGHER
 ON ESSAY

ACT EXEMPTION SCORES-
 COMP 23
 ENGLISH 19
 MATH 19
SAT EXEMPTION SCORES-
 COMP 1070
 VERBAL 500
 MATH 500



YES

NO

Are you enrolling in technical courses only?

Yes-go to page 2

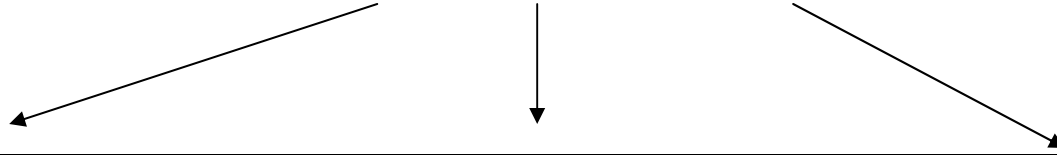
No

GO TO PAGE 3

WHAT GRADE ARE YOU IN?

10 th		11 th			12 th			
HAVE YOU TAKEN A STATE ENTRANCE TEST (THEA, ACCUPLACER, ETC.)?		DOES YOUR 10 TH GRADE TAKS EXEMPT YOU FROM STATE ENTRANCE TESTING?			DO YOU HAVE SCORES THAT EXEMPT YOU FROM STATE ENTRANCE TESTING?			
YES	NO	YES, IN ALL 3 AREAS	FROM ONE OR TWO AREAS ONLY	NO	YES-10 TH GRADE TAKS	YES-11 TH GRADE TAKS	YES-ACT or SAT	NO
You may enroll for classes in areas you passed on state entrance test. You must pass at least one section to enroll. *Requires special permission from your high school.	Take all 3 parts of state entrance test, then---	You may take any class. * Please note this exemption will be valid in 12 th grade but not in college (It is not a permanent exemption).	You may only take classes from exempt areas unless you take & pass that part of state entrance test.	Take all 3 parts of state entrance test, and take classes in areas you pass. You must pass at least one section to enroll.	See 11 th grade section (does not apply to new DC 12 th graders- they <u>must</u> use 11 th grade TAKS).	You may take classes in the areas in which you are exempt. For any areas in which you are not exempt, you need to take & pass state test in that area.	You may take classes in the areas in which you are exempt. For any areas in which you are not exempt, you need to take & pass state test in that area.	Take all 3 parts of state entrance test.

WHAT GRADE ARE YOU IN?



10 th		11 th		12 th			
HAVE YOU TAKEN A STATE ENTRANCE TEST (THEA, ACCUPLACER, ETC.)?		DID YOU MEET THE HIGH SCHOOL PASSING STANDARD (NOT EXEMPTION SCORE) ON AT LEAST ONE PART OF THE 10 TH GRADE TAKS?		DID YOU MEET THE HIGH SCHOOL PASSING STANDARD (NOT EXEMPTION SCORE) ON AT LEAST ONE PART OF THE 11 TH GRADE TAKS (FOR STUDENTS WHO DID NOT TAKE DUAL CREDIT AS AN 11 TH GRADER-STUDENTS WHO TOOK IT AS 11 TH GRADERS CAN CONTINUE USING 10 TH GRADE TAKS)?			
YES	NO	YES	NO	YES	NO		
		HAVE YOU TAKEN A STATE ENTRANCE TEST?		HAVE YOU TAKEN A STATE ENTRANCE TEST?			
		You may enroll in technical credit courses.	YES	NO	You may enroll in technical credit courses.	YES	NO
			You may enroll in credit classes if you passed at least one section. If you failed all three sections you may enroll in Continuing Education ONLY.	You may enroll in Continuing Education ONLY.		You may enroll in credit classes if you passed at least one section. If you failed all three sections you may enroll in Continuing Education ONLY.	You may enroll in Continuing Education ONLY.
*Requires special permission from your high school.							

ADVISING FLOWCHART

HAVE YOU TAKEN A STATE ENTRANCE TEST?

NO			YES		If student took courses at another state institution, enter FICE Code for college where test was taken for areas passed. Enter test scores & dev ranges for areas not passed. If student tested elsewhere but didn't take classes, enter test scores.
Do you have an exemption?	YES	If exempt by test scores (SAT, TAKS, ACT), be sure scores are in system. If exempt by of out-of-state or private course work, enter "T" and current term code. If otherwise exempt (military, etc.), enter code.	AT HILL COLLEGE??	NO	
NO			YES		
Are You Enrolling in a Certificate of Completion?	YES	Enter Code 5 and enter Major Code	Did you pass all 3 parts?	NO	You may only take classes in areas in which you passed. You MUST enroll in a developmental class.
NO			YES		Enter Developmental Code for areas NOT passed
You must take a state entrance test and any resulting Developmental Courses.			You may take any class		