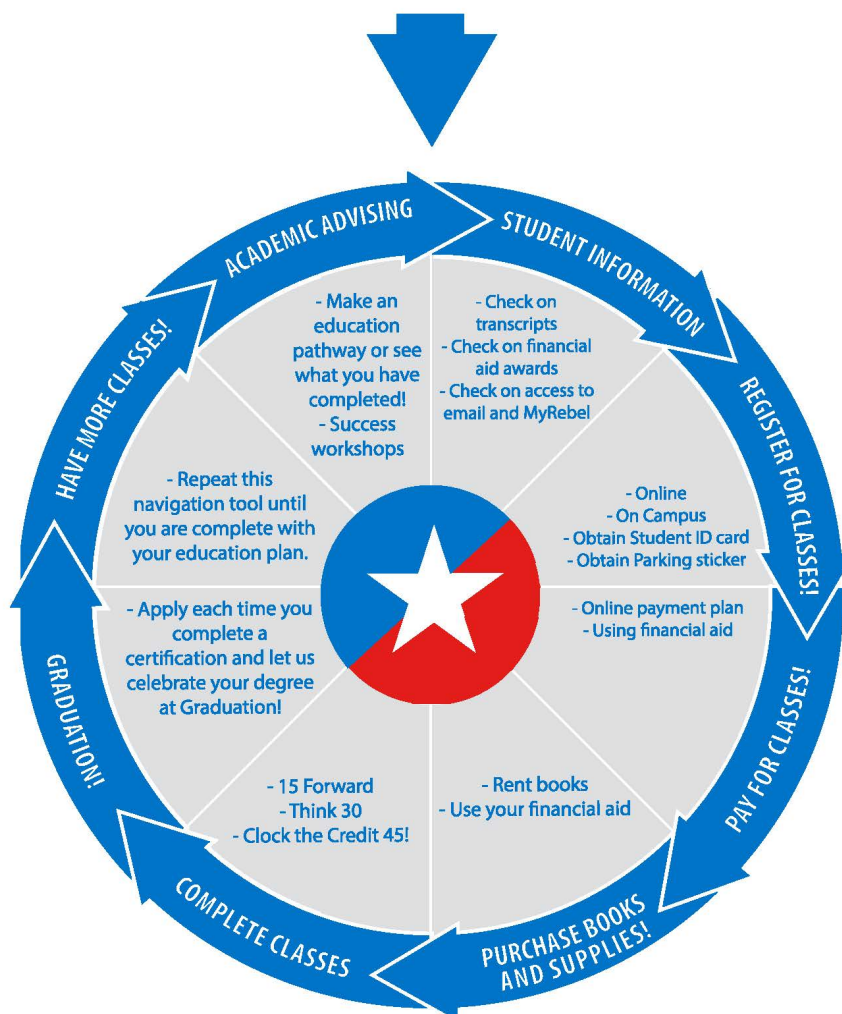




MUSIC FIELD OF STUDY

The Music program at Hill College offers the full first two years of academic study for majors in music as well as opportunities for elective students and community members to study and perform as part of a program of lifetime learning. Music majors are expected to perform academically and musically at a level that will prepare them sufficiently for study at the university level.

Submit Apply Texas application, submit FAFSA, request official transcripts, submit test scores and provide proof of Meningitis shot.



For more information, contact:



MUSIC FIELD OF STUDY EDUCATION PLAN

Transfer students should review all transcripts with an academic advisor to determine if the courses apply to this education plan.

Name: _____

Student ID#: _____

Texas State Initiative (TSI) status Complete: ____ Incomplete: ____ (see advisor)

MC 1121 Music Field of Study		60 Hours	TSI Required	
Required Core Courses (27 Hours)				
Course	Title	Date completed	Grade	
ENGL 1301	Composition I			
ENGL 1302	Composition II			
HIST 1301	US History I			
HIST 1302	US History II			
GOVT 2305	Federal Government			
GOVT 2306	Texas Government			
	Creative Arts* (Recommended: MUSI 1306)			
	Mathematics*			
	Social & Behavioral Sciences*			

Instrumental Pathway (33 Hours)				
Course	Title	Date completed	Grade	
MUEN 2124	Band (4 Hours)			
MUSI 1116	Elem. Sight-Singing and Ear Training			
MUSI 1117	Elem. Sight-Singing and Ear Training			
MUSI 1181	Class Piano			
MUSI 1182	Class Piano			
MUSI 1307	Music Literature			
MUSI 1311	Elementary Harmony			
MUSI 1312	Elementary Harmony			
MUSI 2116	Intermediate Sight-Singing and Ear Training			
MUSI 2117	Intermediate Sight-Singing and Ear Training			
MUSI 2311	Intermediate Harmony			
MUSI 2312	Intermediate Harmony			
MUAP X2XX	Applied Music Specialization (8 Hours)			

For more information, contact:

Division: 254.659.7882 | Student Information Services: 254.659.7600 | Academic Advising: 254.659.7650



Vocal Pathway (33 Hours)			
Course	Title	Date completed	Grade
MUEN 2143	Chorale (4 Hours)		
MUSI 1116	Elem. Sight-Singing and Ear Training		
MUSI 1117	Elem. Sight-Singing and Ear Training		
MUSI 1181	Class Piano		
MUSI 1182	Class Piano		
MUSI 1307	Music Literature		
MUSI 1311	Elementary Harmony		
MUSI 1312	Elementary Harmony		
MUSI 2116	Intermediate Sight-Singing and Ear Training		
MUSI 2117	Intermediate Sight-Singing and Ear Training		
MUSI 2311	Intermediate Harmony		
MUSI 2312	Intermediate Harmony		
MUAP 1281	Voice (8 Hours)		

*See Core Curriculum for course options

For more information, contact:

Division: 254.659.7882 | Student Information Services: 254.659.7600 | Academic Advising: 254.659.7650