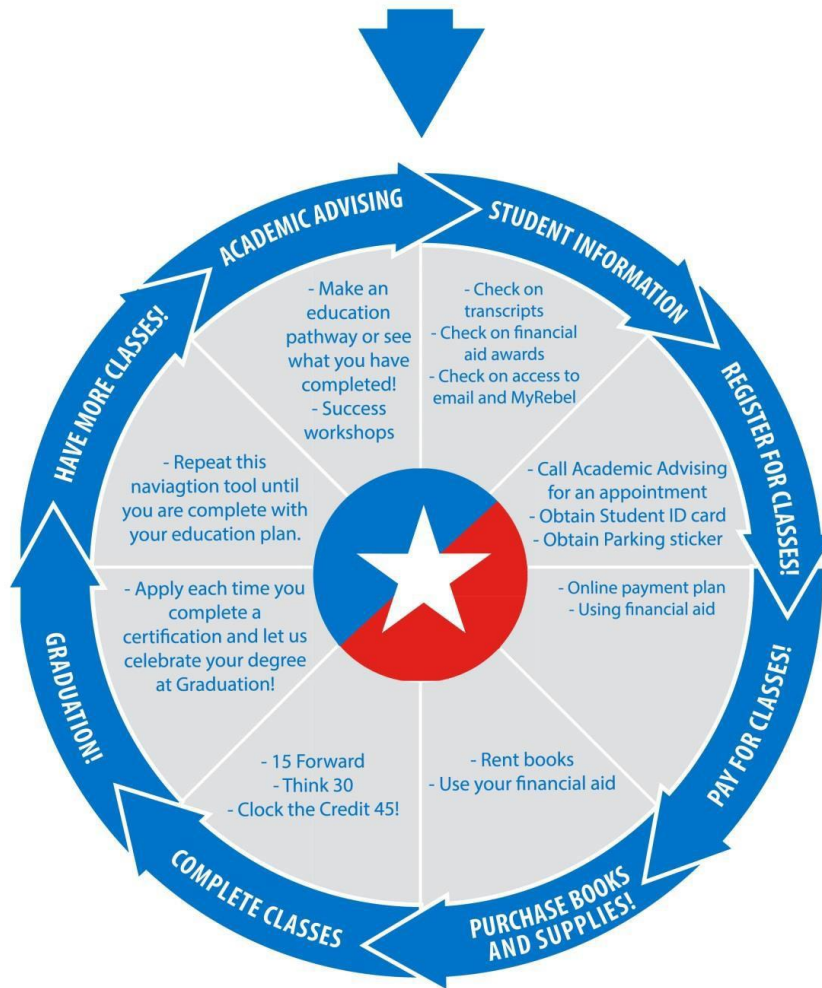




Agriculture Associate of Arts Education Plan

Hill College's two-year degree program leading to an Associate of Arts degree in Agriculture is designed to fill the needs of those students pursuing a high agricultural degree at a university or a career on a farm, ranch or other agriculturally oriented business. Students may decide to concentrate in animal science, agricultural business or agronomy. Students will find employment opportunities in Farm and Ranch Manager, Food and Fiber Technology, Wholesale and Retail Marketing, Landscaping, Turf Grass Technicians, Pet Care and/or Animal trainer, Meat Processing, Food Technicians, Commodity Merchants, Forest and/or Range Manager, Parks service and much more.

Submit Apply Texas application, submit FAFSA, request official transcripts, submit test scores and provide proof of Meningitis shot.



For more information, contact:

Division: 254-760-7709 | Student Information Services: 254.659.7600 | Academic Advising: 254.659.7650



Agriculture Associate of Arts Education Plan

Transfer students should review all transcripts with an academic advisor to determine if the courses apply to this education plan.

Name: _____

Student ID#: _____

Texas State Initiative (TSI) status. Complete: _____ Incomplete: _____ (see advisor)

Agriculture Associate of Arts 60 hours (TSI Required)			
Required Core Courses 42 Hours			
Course	Title	Date completed	Grade
ENGL 1301	Composition I		
ENGL 1302	Composition II		
HIST 1301	United States History I		
HIST 1302	United States History II		
GOVT 2305	Federal Government		
GOVT 2306	Texas Government		
BCIS 1305	Business Computer Applications		
SPCH 1315	Public Speaking		
See catalog	*Select one course for Mathematics from MATH		
See catalog	*Select one course for Life & Physical Sciences from BIOL, CHEM, ENVR, PHYS		
See catalog	*Select one course for Life & Physical Sciences from BIOL, CHEM, GEOL, ENVR, PHYS		
See catalog	*Select one course for Language, Philosophy & Culture from ENGL, HUMA, SPAN		
See catalog	*Select one course for Creative Arts from ARTS, DRAM, MUSI		
See catalog	*Select one course for Social & Behavioral Sciences from ECON, PSYC, SOCI		
	<i>*See Core Curriculum for Course Options</i>		
Electives – 18 Hours			
*Electives from Core	Select 2/3 Science and/or Math lab hours		
Agriculture Electives	Select 15/16 hours from courses listed below		
Course	Title		
AGRI 1131	The Agriculture Industry		
AGRI 1419	Animal Science		
AGRI 1407	Agronomy		
AGRI 2317	Introduction to Agriculture Economics		
*AGRI	Agriculture Elective		
*AGRI	Agriculture Elective		
	<i>*See Core Curriculum for Course Options</i>		

For more information, contact:

Division: 254-760-7709 | Student Information Services: 254.659.7600 | Academic Advising: 254.659.7650