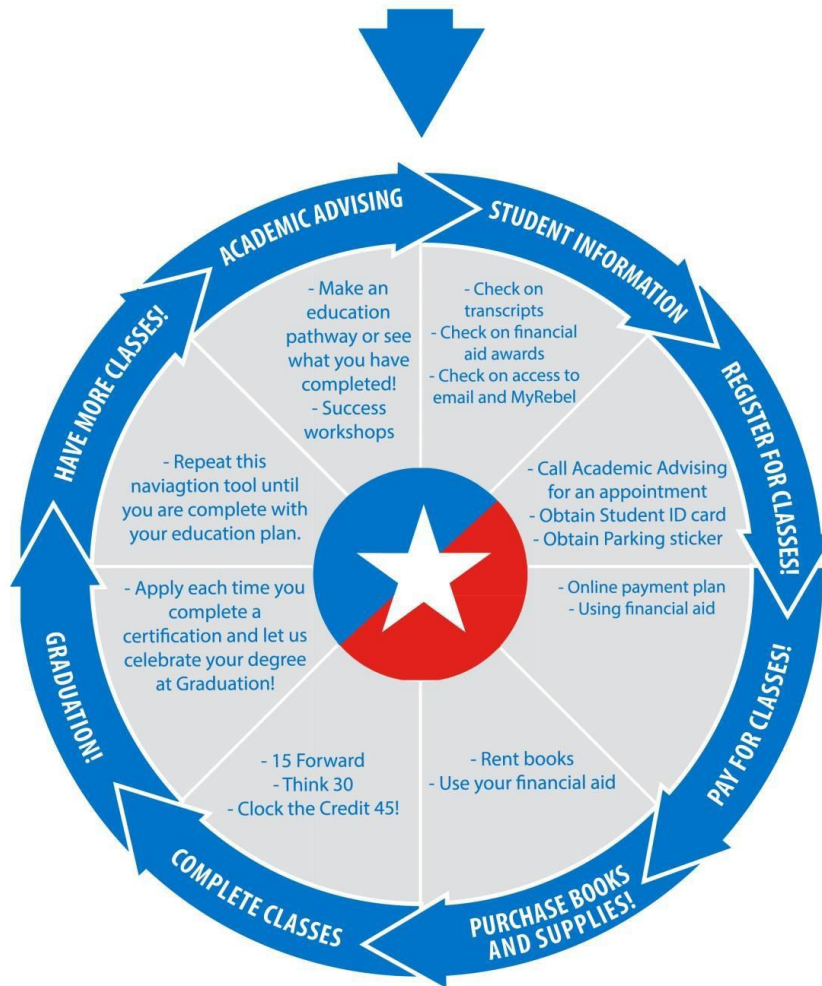




# Business Administration, Associate of Arts Education Plan

Business Administration/Management is found in all industries and is expected to grow by 12 percent in the next several years. No wonder business is the largest undergraduate major in the United States. The Hill College Business Administration program provides knowledge and skills in planning, directing and evaluating business functions essential and efficient for business operations. Business Administration careers are available in every sector of the economy. Hill College’s Business Certificates and Associate Degrees provide up-to-date management skills for the business and industrial community. The degrees offer management, marketing and academic core courses.

Submit Apply Texas application, submit FAFSA, request official transcripts, submit test scores and provide proof of Meningitis shot.



For more information, contact:

Division: 817.760.7709 | Student Information Services: 254.659.7600 | Academic Advising: 254.659.7650



# Business Administration Associate of Arts Education Plan

Transfer students should review all transcripts with an academic advisor to determine if the courses apply to this education plan

Name: \_\_\_\_\_

Student ID#: \_\_\_\_\_

Texas State Initiative (TSI) status. Complete: \_\_\_\_\_ Incomplete: \_\_\_\_\_ (see advisor)

**MC: 4021 Business Associate of Arts 60 hours (TSI Required)**  
**Required Core Courses 24 Hours**

Course	Title	Date completed	Grade
ENGL 1301	Composition I		
ENGL 1302	Composition II		
HIST 1301	United States History I		
HIST 1302	United States History II		
GOVT 2305	Federal Government (Federal constitution & topics)		
GOVT 2306	Texas Government (Texas Constitution & Topics)		
BCIS 1305	Business Computer Applications (3SCH version)		
SPCH 1315	Public Speaking		

**Additional Required Core Course Options 18 Hours**

\*See Core Curriculum for course options

Course	Title	Date completed	Grade
See catalog	*Select one course for Mathematics from MATH		
See catalog	*Select one course for Life & Physical Sciences from BIOL, CHEM, ENVR, PHYS		
See catalog	*Select one course for Life & Physical Sciences from BIOL, CHEM, GEOL, ENVR, PHYS		
See catalog	*Select one course for Language, Philosophy & Culture from ENGL, HUMA, SPAN		
See catalog	*Select one course for Creative Arts from ARTS, DRAM, MUSI		
See catalog	*Select one course for Social & Behavioral Sciences from ECON, PSYC, SOCI		

**Electives (2 Science lab hours will be counted as electives)**

\*See Core Curriculum for course options

Course	Title	Date completed	Grade
First Lab	*Counts as 1-hour elective		
Second Lab	*Counts as 1-hour elective		

**Business Electives 16 Hours**

Course	Title	Date completed	Grade
ACCT 2301	Principles of Financial Accounting		
ACCT 2302	Principles of Managerial Accounting		
BUSI 1301	Business Principles		
BUSI 2305	Business Statistics		
ECON 2301	Principles of Macroeconomics		
1 Activity PHED	Select from catalog course options		

For more information, contact:

Division: 817.760.7709 | Student Information Services: 254.659.7600 | Academic Advising: 254.659.7650