



AAS ASSOCIATE DEGREE NURSING

The Hill College Associate Degree Nursing Program is a year 60-hour Associate of Applied Science degree.

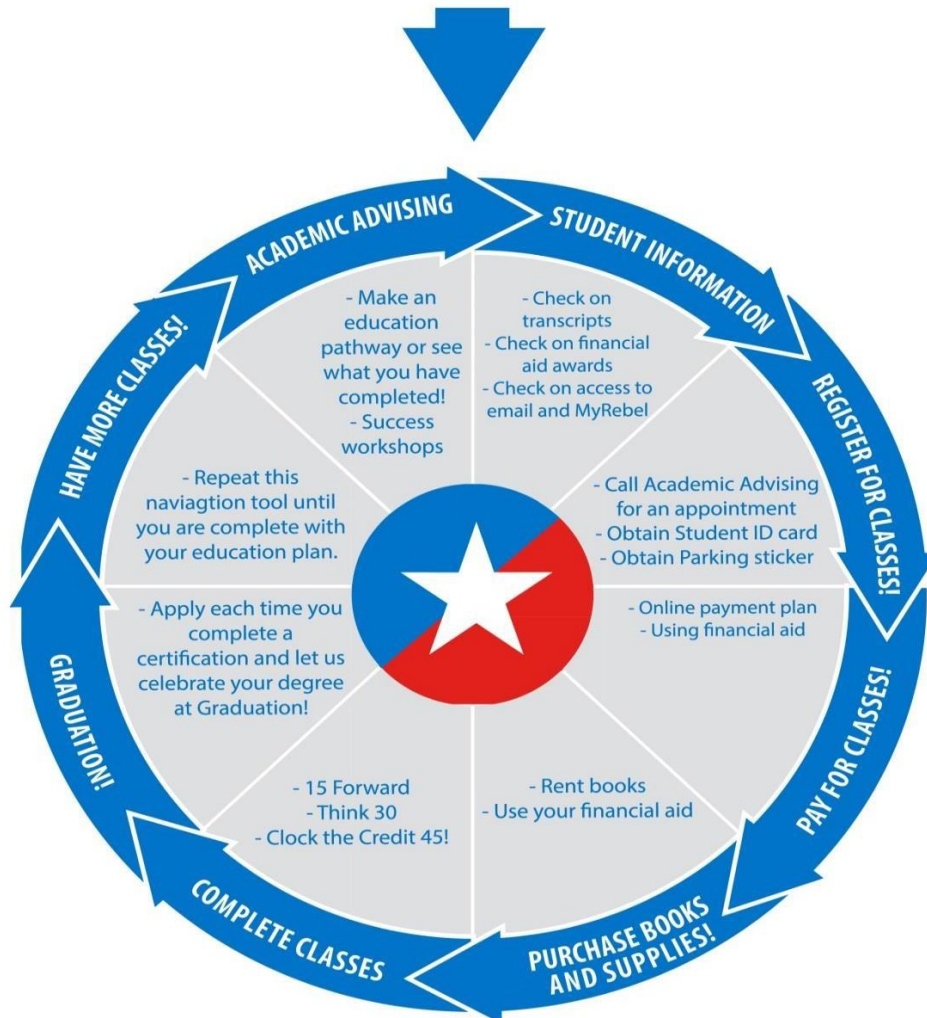
The Hill College Nursing program offers the highest quality health-related education and training to students of our community and surrounding areas.

The program offers students the ability to dedicate themselves to increase their knowledge and developing their talents thus allowing them to become highly skilled nurses able to provide patient-centered care in hospitals or other health care facilities.

At Hill College, we strive for excellence to ensure the classroom theory and evidence-based practice in the clinical settings attainable. With the collaboration of Hill College and our community hospitals in our service area, it is our privilege to offer this program to our students.

The student needs to be aware that the Associate Degree Nursing program is a specialized enrollment program that requires the student to complete a separate application process for selection. The Associate Degree Nursing program starts a new class every Fall Semester. Hillsboro County Campus even year entry. Johnson County Campus odd year entry. See page three.

Submit Apply Texas application, submit FAFSA, request official transcripts, submit test scores and provide proof of Meningitis shot.



For more information, contact:

Division: 817.760.5921 | Student Information Services: 254.659.7600 | Academic Advising: 254.659.7650



Pathway to Success Associate Degree Nursing AAS Education Plan

Transfer students must send transcripts and course descriptions to the nursing department for course evaluation.

Name:	Student ID#:
Texas State Initiative (TSI) status. <input type="checkbox"/> Complete: <input type="checkbox"/> Incomplete: <input type="checkbox"/> (see advisor)	

ADMISSION TO THE COLLEGE DOES NOT GUARANTEE ADMISSION TO THE ASSOCIATE DEGREE NURSING PROGRAM.
The College and/or Nursing Department reserves the right to modify degree requirements based on approved curricular changes.

Application deadline: July 1.

Hill County Campus 1 Even Year Fall admission.

Johnson County Campus Odd Year Fall admission.

MC:9999 or 3083	Required Prerequisite Coursework 13 HOURS (TSI required) with a "B" or better to progress to Level I	13 HOURS	(TSI required)
Course	Title	Date completed	Grade
BIOL 2401	Anatomy and Physiology I (See specific program criteria)		
RNSG 1301	Pharmacology (required grade "C" or better)		
ENGL 1301	Composition I		
MATH 1314	College Algebra		
MC 7012	Associate of Applied Science ADN Program (RN)	60 credit hours	(TSI required)
<i>Level I</i>	<i>Completion of Required Prerequisite 13 credit hour coursework with a "B" or better and acceptance to the program before progression to Level I</i>		
Course	Title	Date completed	Grade
BIOL 1322	Nutrition and Diet Therapy (required grade "B" or better)		
RNSG 1513	Nursing Foundations		
RNSG 1160	Clinical Registered Nurse Training		
<i>Level II</i>	<i>Level I RNSG courses must be completed with a "C" or better.</i>		
Course	Title	Date completed	Grade
RNSG 1412	Nursing Care of Childbearing & Childrearing Family		
RNSG 1261	Clinical Registered Nurse Training		
RNSG 1441	Common Concepts of Adult Health		
BIOL 2402	Anatomy and Physiology II (recommend taken pre-entrance). (See specific program criteria)		
<i>Level III</i>	<i>Level II RNSG courses must be completed with a "C" or better and A&P II grade must be a "B" or better to progress to Level III.</i>		
Course	Title	Date completed	Grade
RNSG 1343	Complex Concepts of Adult Health		
RNSG 2213	Mental Health Nursing		
RNSG 2261	Clinical Registered Nurse Training		
BIOL 2420	Microbiology (See specific program criteria) (Required grade "B" or better)		
<i>Level IV</i>	<i>Level III RNSG courses must be completed with a "C" or better and Microbiology grade must be a "B" or better progress to Level IV.</i>		
Course	Title	Date completed	Grade
RNSG 2201	Care of Children & Families		
RNSG 2331	Advanced Concepts of Adult Health		
RNSG 2262	Clinical Registered Nurse Training		
PSYC 2314	Lifespan Growth and Development (Required grade "B" or better)		
*Elective	Elective Language, Philosophy & Culture or Creative Arts Core (Required grade "B" or better)		
+Capstone Experience *See Core Curriculum for course options. Completion of 60 credits is required to satisfactory complete the Associate Degree Nursing program.			

For more information, contact:

Division: 817.760.5921 | Student Information Services: 254.659.7600 | Academic Advising: 254.659.7650



Associate Degree Nursing AAS Education Plan

Explanation of Application Process and Course Requirements

Hill County Campus Even Year Entry

Johnson County Campus Odd Year Entry

The process to apply for admission is a two-step, competitive process. The two-step process to enter the nursing program is separate from, and in addition to, the application to Hill College. Application to Hill College and the Nursing Department are required. **PRIORITY FOR SELECTION IS DETERMINED BY COMPLETION OF STEP I AND II BY THE July 1 DEADLINE DATE OF THE PROGRAM YEAR OF ENTRY. COMPLETION OF STEP I AND II DOES NOT GUARANTEE SELECTION IN THE ASSOCIATE DEGREE NURSING PROGRAM.**

STEP I: APPLY TO HILL COLLEGE. [HTTPS://WWW.HILLCOLLEGE.EDU](https://www.hillcollege.edu)

1. Make an appointment with the Hill College Academic Advising and Success Center
 - Hill County Campus 254.659.7860 ◦ Johnson County Campus 817.760.5650 ◦ Burleson Center 817.760.5545
2. *Submission of all official education transcripts.*
3. *Texas Success Initiative (TSI) must be complete.*

STEP II: NURSING PROGRAM APPLICATION REQUIREMENTS; MUST BE IN FILE/POSTMARKED BY July 1:

1. Complete the Health and Public Services application at www.hillcollege.edu/rn
2. Make an appointment with the Health Science Department. (Walk-in's are welcome)
 - a. Hill County Campus – Teresa Palinkas 254-659-7920 or tpalinkas@hillcollege.edu
 - b. Johnson County Campus- Dee Joseph-Williams 817-760-5921 or awilliams@hillcollege.edu
3. Completed/in-progress required pre-requisites with a “B” or better (BIOL 2401; ENGL 1301, MATH 1314); **(RNSG 1301 “C” or better)**
4. **Transfer students must send transcripts and course descriptions to the nursing department for course evaluation.**
5. Official College Transcripts showing completion/in progress with a “B”, unless noted otherwise, or better of the pre-requisites. Must be in the applicants file by the deadline date.
6. Achieve a minimum GPA of 3.0 on all pre-requisites listed above and recommended courses (BIOL 1322, BIOL 2402, BIOL 2420, PSYC 2314 and Language/Arts core elective).
7. Science courses must be within 5 years by the deadline date (BIOL 2401, 2402, and 2420).
8. High School graduates or High School Equivalency scores (Mandatory for ALL applicants).
 - a. Official High School Transcript with a date of graduation/completion or High School Equivalency scores **OR**
 - b. Out of Country High School Transcripts must be translated into English by a certified translator. The original document must be also submitted.
9. TOEFL Procedure: *Demonstrate English proficiency as an admission requirement. Refer to #7 above.*

This may be demonstrated by:

 - a. 2 years of High School in the United States and its territories. **OR**
 - b. Submission of acceptable scores from the Test of English as a Foreign Language Test (TOEFL) within two years of the posted deadline date of program application.
10. TOEFL Waiver: *TOEFL Waiver (RN applicants only) The student can request a TOEFL waiver form from the Health Science department if they meet the following criteria: completion with a “B” or better of 4 different college level English courses and 1 college level communication course; from an accredited US college/university.*
11. TEAS test completed before deadline date
 - a. Register and pay \$70.00 for the TEAS test at www.atitesting.com. Select one of the available Hill College testing dates. After you have scheduled your test date you will need to present a photo ID at the Hill College Testing Center on the day of your test.
 - b. Minimum passing on the following sections of the TEAS test:
 - Overall 66.1% ● Reading 72.8 % ● Math 68.8% ● Science 58.0% ● (English 66.8% Optional)
12. Professional References Submit three (3) professional references from Employers/Supervisors, Co-workers or Academic faculty. Must be on the approved Nursing Department reference form which can be found on www.hillcollege.edu/rn.
13. Immunizations must be complete or in progress. List can be found on www.hillcollege.edu/rn.
14. Current American Heart Association BLS Provider
15. Applicant must have a clear criminal background. **For students in this course who may have a criminal background, please be advised that the background could keep you from being licensed by the State of Texas. If you have a question about your background and licensure, please speak with your faculty member or the department chair. You also have the right to request a criminal history evaluation letter from the applicable licensing agency.**

For more information, contact:

Division: 817.760.5921 | Student Information Services: 254.659.7600 | Academic Advising: 254.659.7650